



HS Solutions

Everything your institution will ever need.

Outdoor / Indoor LED Display Infrastructure Solutions



HS Solutions

Everything your institution will ever need.

"Powering India's Digital Visibility"

Office No- 214, Second Floor, Jagdish Industrial Estate, Vartak Nagar,
Thane West - 400606 - Maharashtra

 hsledsolutions@gmail.com / shreedhar.r@hssolutions.co.in

 **+91 9224226101 / 9222226101**



<https://led.hssolutions.co.in/>



HS Solutions

Everything your institution will ever need.



TIMEX

ABOUT US

Established in 2016, HS Solutions represents the pinnacle of excellence in premium LED display technology. We deliver sophisticated, high-definition visual environments that redefine how brands communicate, inspire, and dominate attention.

With landmark executions across Mumbai, Pune, Nashik, Hyderabad, Bengaluru, Chennai, Delhi, Ahmedabad, Kolkata, Jaipur, Lucknow, Bhopal, and Indore, HS Solutions has earned the confidence of discerning clients who demand nothing but perfection. Our solutions are crafted with superior engineering, refined aesthetics, and uncompromising quality standards, ensuring every installation radiates prestige and performance.

From luxury retail spaces to iconic outdoor media, corporate arenas to grand events, we transform vision into breathtaking digital experiences — supported by meticulous execution and white-glove service.

At HS Solutions, we don't just install screens.
We create powerful visual dominance.

 + 91 9224226101 / +91 9222226101

 shreedhar.r@hssolutions.co.in

 <https://led.hssolutions.co.in>

OUTDOOR LED DISPLAY

HIGH BRIGHTNESS HIGH WATERPROOF RATING OUTDOOR LED DISPLAY MODULE, FULL-COLOR RGB LED SCREEN PANEL WITH PIXEL PITCH AVAILABLE FROM P6MM AND P4MM TO P3MM AND P2.5MM.



REFRESH RATE

Well-selected LED driver IC ensure LED modules deliver high refresh rate over 1920Hz and even up to 3840Hz, and eliminate module flicker problems.



VARIOUS PIXELS

Offers a range of pixel pitch options from P2.5 to P10, providing flexibility to accommodate diverse display requirements with precision and clarity.



BRIGHTNESS

Delivering high brightness levels exceeding 5500 Nits, and even up to 7000 Nits, it ensures clear visibility in outdoor settings even under intense sunlight.



IP65 WATERPROOF

Made of high-protection PCB board, it provides IP65 usage level to ensure long-term outdoor operation



WIDE VIEWING

Provides up to 160 viewing angles to minimize viewing blind spots and maximize visual coverage, offering an excellent visual experience.



HIGH CONTRAST

Exhibiting a grey level of 14 bits and a contrast ratio of 5000:1, the module orchestrates a visual symphony of nuanced shades and crisp contrast, adding depth and dimension to every frame.

OUTDOOR LED DISPLAY P6, P4, P3, P2.5, PIXEL



THE BENEFITS OF OUTDOOR LED DISPLAYS



HIGH VISIBILITY AND BRIGHTNESS

With high brightness levels, they can compete with daylight or artificial lights, maintaining clarity even in direct sunlight.



DURABILITY AND WEATHER RESISTANCE

Ultra-high weatherproofing capabilities, including IP65 or higher ratings for water and dust resistance.



REAL-TIME UPDATES

Outdoor LED displays make it simple to update messaging remotely or in real time. Businesses benefit from flexibility, such as making an instant announcement or modifying promotions.



DYNAMIC CONTENT DELIVERY

Can display various media types—from live videos to animations or still graphics. Content can be scheduled and remotely updated with ease



ENERGY EFFICIENCY

Designed with energy-saving LEDs which help reduce electricity and operation costs while providing superior display quality.



HIGH RETURN ON INVESTMENT

While the upfront cost of outdoor LED screens is higher than traditional advertising tools, their longevity, impact, and digital nature ensure strong ROI.

INDOOR LED DISPLAY

THE INDOOR LED DISPLAY IS AN LED VIDEO WALL DESIGNED FOR INDOOR PURPOSES TO DISPLAY IMAGES, VIDEO AND OTHERS IT OFFERS HIGH GREYSCALE CAPABILITIES TO ENSURE SMOTH TRANSITIONS AND ACCURATE COLOR REPRESENTATION, RESULTING IN STUNNING VISUALS.



REFRESH RATE

High refresh rate over 1920Hz and even up to 7680Hz, and eliminate module flicker problems.



PIXEL PITCH

P4, P3, P2.5, P2 pixel pitch offer a high resolution of 160,000 dot/sqm.



BRIGHTNESS

With brightness 600-1000Nits for indoor installation, 4500-7000Nits for outdoor usage.



IP65 WATERPROOF

IP65 protection level to ensure long-term outdoor operation.



WIDE VIEWING

160 viewing angles to minimize viewing blind spots and maximize visual coverage.

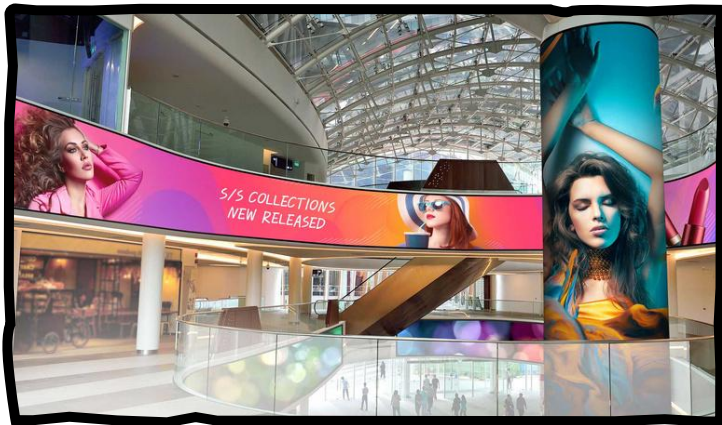


HIGH CONTRAST

High contrast ratio of 5000:1 to adding depth and dimension to every frame.

INDOOR LED DISPLAY

P4, P3, P2.5, P2 PIXEL



THE BENEFITS OF INDOOR LED DISPLAYS



INDOOR LED DISPLAYS OFFER NUMEROUS BENEFITS THAT MAKE THEM INDISPENSABLE FOR VARIOUS INDOOR ENVIRONMENTS, FROM RETAIL STORES AND OFFICES TO EVENT VENUES AND EDUCATIONAL INSTITUTIONS.



SUPERIOR VISUAL PERFORMANCE

Indoor LED displays deliver high-resolution, full-color visuals, ensuring sharp, vivid, and seamless image reproduction. Their higher pixel pitch (smaller gaps between pixels) ensures better clarity, suitable even for close viewing distances.



ENERGY EFFICIENCY

Indoor LED displays generally use energy-efficient LED technology and low-brightness LED, consuming less power than equivalent LCD or projection systems or outdoor LED screens. This reduces operational costs while ensuring consistent high-quality performance.



REAL-TIME UPDATES

Indoor LED displays make it simple to update messaging remotely or in real-time. Businesses benefit from flexibility, such as making an instant announcement or modifying promotions.



DYNAMIC CONTENT DELIVERY

Can display various media types—from live videos to animations or still graphics. Content can be scheduled and remotely updated with ease



+ 91 9224226101 / +91 9222226101



shreedhar.r@hssolutions.co.in



Office No- 214, Second Floor, Jagdish Industrial Estate, Vartak Nagar, Thane West - 400606

